



SANITARY SOLUTIONS^{INC.}

Bulldog Fittings/Valves...Bulldog Tough.

Sanitary A270 Polish ID/OD Tube



A[®]
3
33-03

Sanitary Solutions Polish ID/OD A270 Tube is:

Polish ID/OD A270 Tube Stocking Alloys: T304 or T316L

Polish ID/OD A270 Tube Sizes: ½" – 12" OD Tube

Polish ID/OD A270 Tube Wall Thickness: 0.065—0.120

Note: OD Tube and Pipe Sizes do not interchange!

Polish ID/OD A270 Tube Sanitary Finish: 20 Ra ID/32 Ra OD

Sanitary Solutions Polish ID/OD A270 Part Number Breakdown:

<u>Part Number</u>	<u>Size</u>	<u>Alloy</u>
PT7	2"	304 or 316L
7 = Polish OD/OD		

Notice: Sanitary Solutions will not cover Fuel Freight Charges

Sanitary Solutions supplies only 20' Lengths

Tubing ships only via Truck

Broken box charge for all less than freight allowed orders

www.sanitarysolutions.com

Sanitary Solutions Inc. 1-888-909-3569 or 1-855-640-7871

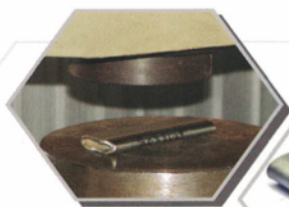
Prices are subject to change without notice; please call before you quote



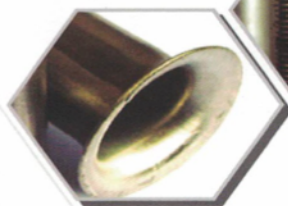
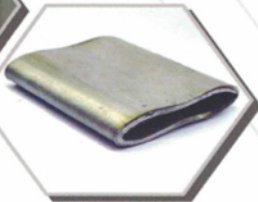
SANITARY SOLUTIONS^{INC.}

Bulldog Fittings/Valves...Bulldog Tough.

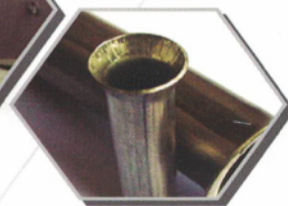
Inspection and Tests



Flattening Test



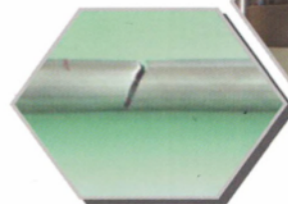
Flange Test (90°)



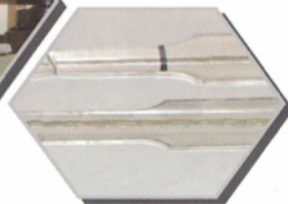
Flaring Test (60°)



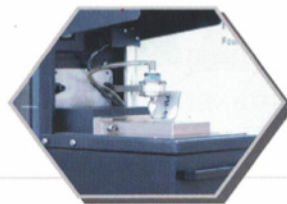
Hardness Test



Tensile & Elongation Test



Metallurgical Microscope

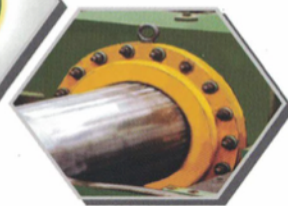


Spectrometer : Analyses the chemical compositions of stainless steel products.



Hydrostatic & Pneumatic Pressure Test :

Each length of finished pipe is subjected to the hydrostatic or pneumatic pressure test. Each pipe must withstand the pressure without leakage.



www.sanitarysolutions.com

Sanitary Solutions Inc. 1-888-909-3569 or 1-855-640-7871

Prices are subject to change without notice; please call before you quote



SANITARY SOLUTIONS^{INC.}

Bulldog Fittings/Valves...Bulldog Tough.

Sanitary Stainless Steel Tubing

Materials

- 304L & 316L available from stock.

Annealing

- Hydrogen bright annealed in line to 1900°F(1040° C) minimum and rapidly quenched.

Surface Finishes*

- Surface finish is 20 Ra ID maximum, 30 Ra OD maximum surface roughness measured with the profilometer reading at 90 degrees to major polishing pattern. Our polishing techniques result in surface finishes that lead the industry. All tubing is printed with size, alloy, heat number for full traceability.

Packaging

- In order to ensure sanitary standards, our tubing is packaged using protective sleeving, capped with air tight plastic end caps. The tubing is then placed in thick cardboard cores and capped securely on each end for maximum protection during shipment. Large quantities will be shipped securely in wood or metal crates.

Chemical Composition

Elements	304L (wt%)	316L (wt%)
(C) Carbon, max	0.035	0.035
(Mn) Manganese, max	2.00	2.00
(P) Phosphorus, max	0.040	0.040
(S) Sulphur, max	0.030	0.030
(Si) Silicon, max	0.75	0.75
(Ni) Nickel	8.0 – 13.0	10.0 – 13.0
(Cr) Chromium	18.0 – 20.0	16.0 – 18.0
(Mo) Molybdenum	N/A	2.0 – 3.0
(Fe) Iron	Bal.	Bal.
(Cu) Copper	N/A	N/A
(N) Nitrogen	N/A	N/A

Dimensional Tolerances

Size OD	Nominal Wall	Outside Diameter	Length	Wall
1/2"	0.065"	+/-0.005	+1/8"	+/-10.0%
3/4"	0.065"	+/-0.005	+1/8"	+/-10.0%
1"	0.065"	+/-0.005	+1/8"	+/-10.0%
1.5"	0.065"	+/-0.008	+1/8"	+/-10.0%
2"	0.065"	+/-0.008	+1/8"	+/-10.0%
2.5"	0.065"	+/-0.010	+1/8"	+/-10.0%
3"	0.065"	+/-0.010	+1/8"	+/-10.0%
4"	0.083"	+/-0.015	+1/8"	+/-10.0%
6"	0.109"	+/-0.030	+1"	+/-10.0%
8"	0.109"	+/-0.030	+1"	+/-10.0%
10"	0.120"	+0.061 -0.031	+1"	+/-10.0%
12"	0.120"	+0.061 -0.031	+1"	+/-10.0%